

ASHBOURNE HERITAGE



Count how many cockerels you can find

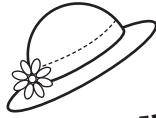
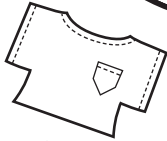
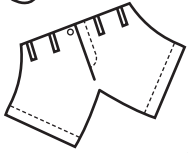
Fact! Ashbourne used to be called Esseburn!



A cockerel is hidden somewhere in the map, can you find it?

Use the numbered wellies to follow the quiz inside.

GINGERBREAD MAN



Ingredients

- 350g Plain flour
- 175g Brown sugar
- 100g Butter
- 1 Egg
- 4 tbsp Golden syrup
- 1 tsp Bicarbonate of soda
- 1/2 tsp Ground ginger

Fantastic gingerbread man recipe

1. Put flour, butter, ground ginger and bicarbonate of soda in a mixing bowl. Mix until crumbly.
2. Add sugar, syrup and egg and mix until a firm pastry
3. Get an adult to preheat oven to 150°C
4. Dust work surface with flour and roll out the pastry to 5mm thick
5. Cut out pastry in shape of gingerbread man.
6. Place cut out pastry on a greased baking tray.
7. Bake for for 15 minutes then remove from oven.
8. When cool, DECORATE!



How many gingerbread men can you count in the shop window?



Dress the gingerbread man

Take a look at the Green Man. Is it true he has 2 faces. Look carefully

SHROVETIDE

Design your own Shrovetide Ball!

FACT!

Ashbourne is the only town where medieval street football is played every year on Shrove Tuesday and Ash Wednesday.



Once upon a time there was a train that chugged through

M

I

B

N

G

N

D

Run run, as fast as you can... Un-scramble the letters to find out who I am